

# Kiran

2 / 3 BHK Apartments  
Rajendra Nagar, Pune



या वास्तूत आता नवे दालन उघडणार  
आयुष्यातील सारी स्वप्ने आता पुरी होणार

मनात होते अशी वास्तू आता हातात आली  
आनंदाने स्नेहाने आता ती उजळून निघाली

जिव्हाळा देणारी माझी माणसं आता इथं असणार  
रोज सा-यांचा आनंद आता इथेच वाटणार

किती दिवस वाट पाहून ही वास्तू निवडली  
घेण्याआधी सारी इच्छा घरभर वावरली

*Kiran*

कुठे काय असणार हे पक्कं चित्र आलं  
सार काही सांगून मगच पाऊल ठेवलं

आता माझा पत्ता इथेच कायम केला  
आमंत्रणाशिवाय स्वागत हाच एक मेळा

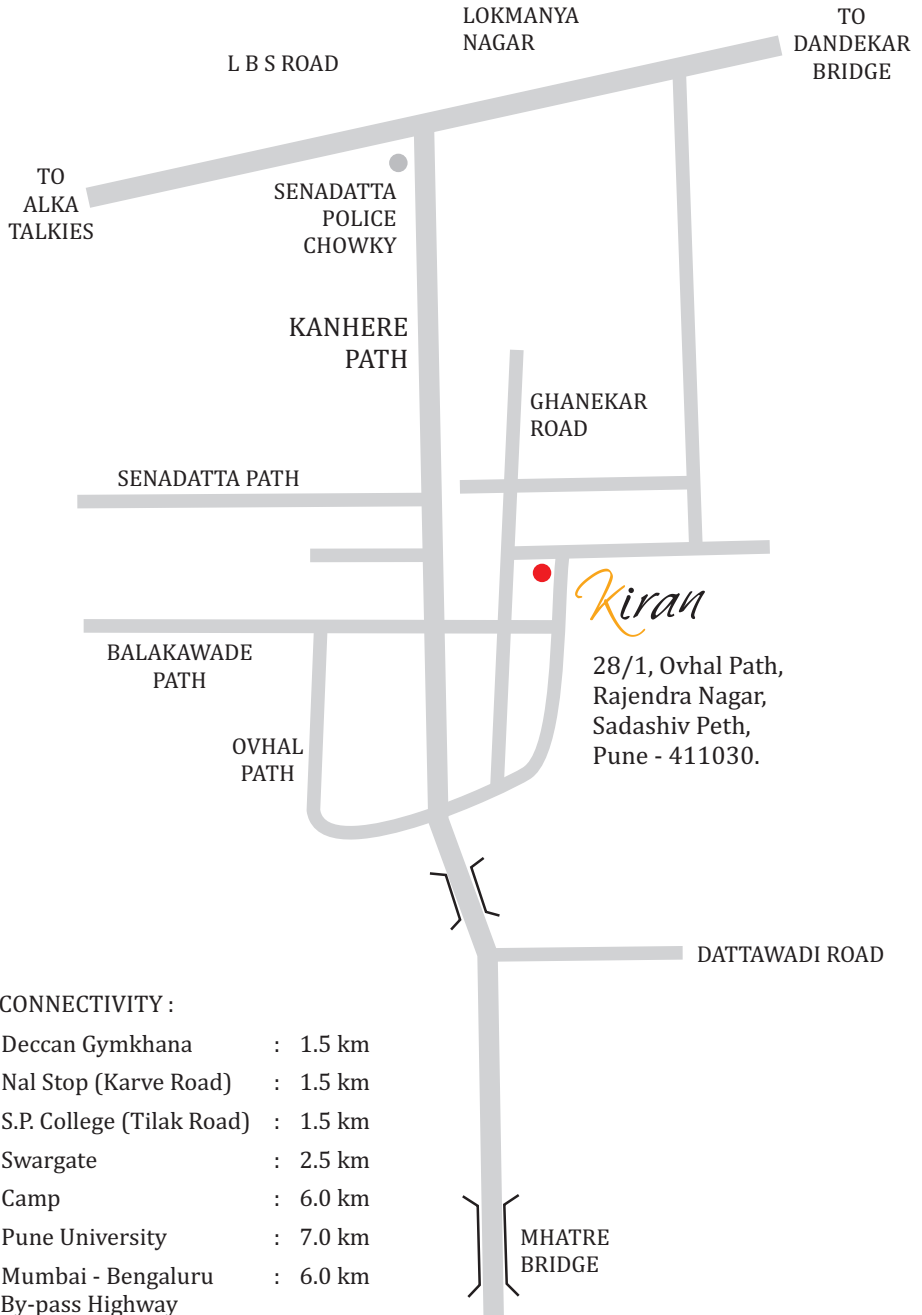
संस्कृतीची परंपरा इथं आम्ही साकारणार  
एक होऊन जगणार.. तुम्हालाही बोलावणार

— सुभाष इनामदार



LOCATION MAP <N

Not to Scale



CONNECTIVITY :

- Deccan Gymkhana : 1.5 km
- Nal Stop (Karve Road) : 1.5 km
- S.P. College (Tilak Road) : 1.5 km
- Swargate : 2.5 km
- Camp : 6.0 km
- Pune University : 7.0 km
- Mumbai - Bengaluru By-pass Highway : 6.0 km

### **Locational Advantage**

Located in the heart of the city with close proximity to top class schools, colleges, shopping malls & business centers

---

### **Spacious apartment layout**

---

### **As per Vastu Shastra**

---

#### **Modular Kitchen**

Stainless steel trolleys  
Laminated shutters and drawers  
Water purifier

---

### **Inverter in all the apartments**

---

### **Battery back-up for lift, lighting in common areas and water pump**

---

### **Solar water heater system**

### **Structure & Masonry**

- RCC framed earthquake resistant structure
- 6" & 4" thick external and internal walls
- Double coat sand faced plaster for external walls
- Internal walls – gypsum finish

### **Electrification**

- Adequate electrical points
- Concealed copper wiring with premium quality switches
- TV, DTH & Telephone points in living and master bed room
- AC points in all bed rooms
- Tubelights & Ceiling Fans in all rooms

**Flooring**

- 2 X 2 vitrified tile flooring in the entire flat
- Anti skid / rustic flooring in terraces, dry balcony & toilets

**Kitchen**

- Granite kitchen platform with stainless steel sink
- Glazed tile dado up to 2 ft
- Provision for washing machine in dry balcony
- Exhaust fan in the kitchen

**Doors & Door frames**

- Laminated door & door frames
- Good quality SS fittings
- Water proof door for toilets

**Windows**

- Powder coated aluminum windows with mosquito net
- M.S. safety grills

**Painting**

- External : Acrylic weather-proof paint
- Internal : OBD paint for walls & ceilings

**Toilets**

- Good quality C.P. fittings, Jaguar or equivalent
- Premium wall mount commodes in all toilets
- Designer basins in all bathrooms
- Designer dado tiles up to lintel level in all bathrooms
- Concealed plumbing
- Single lever diverters in all bathrooms
- Provision for water geyser
- Exhaust fans in all toilets

**Lift & Common Areas**

- Designer high speed elevator with automatic door & battery backup
- Common area lights and water pump with battery backup



**TYPE "A"**  
**2 BHK TOP VIEW**



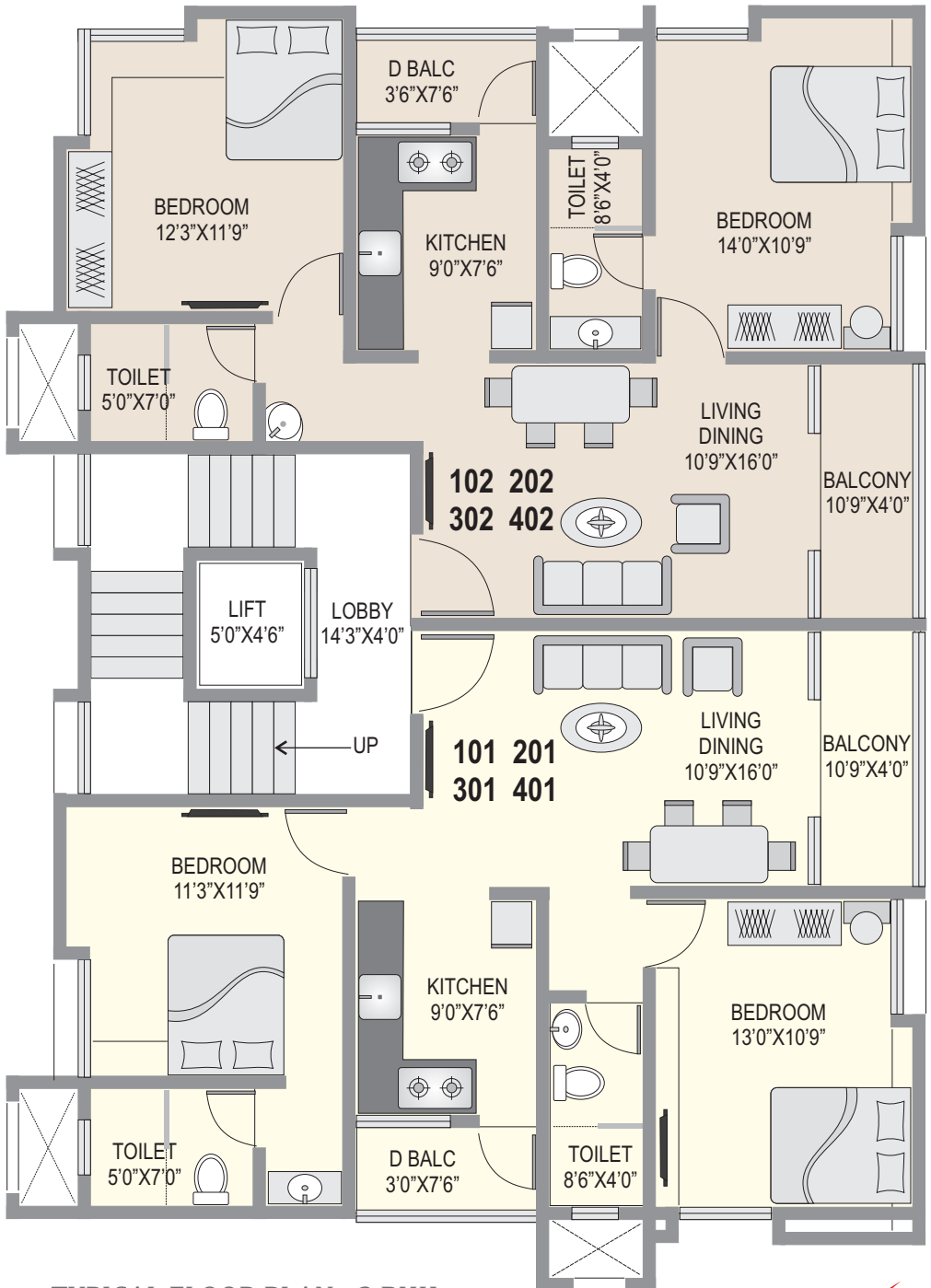
**3 D SECTIONAL VIEW**



**TYPE "B"  
2 BHK TOP VIEW**

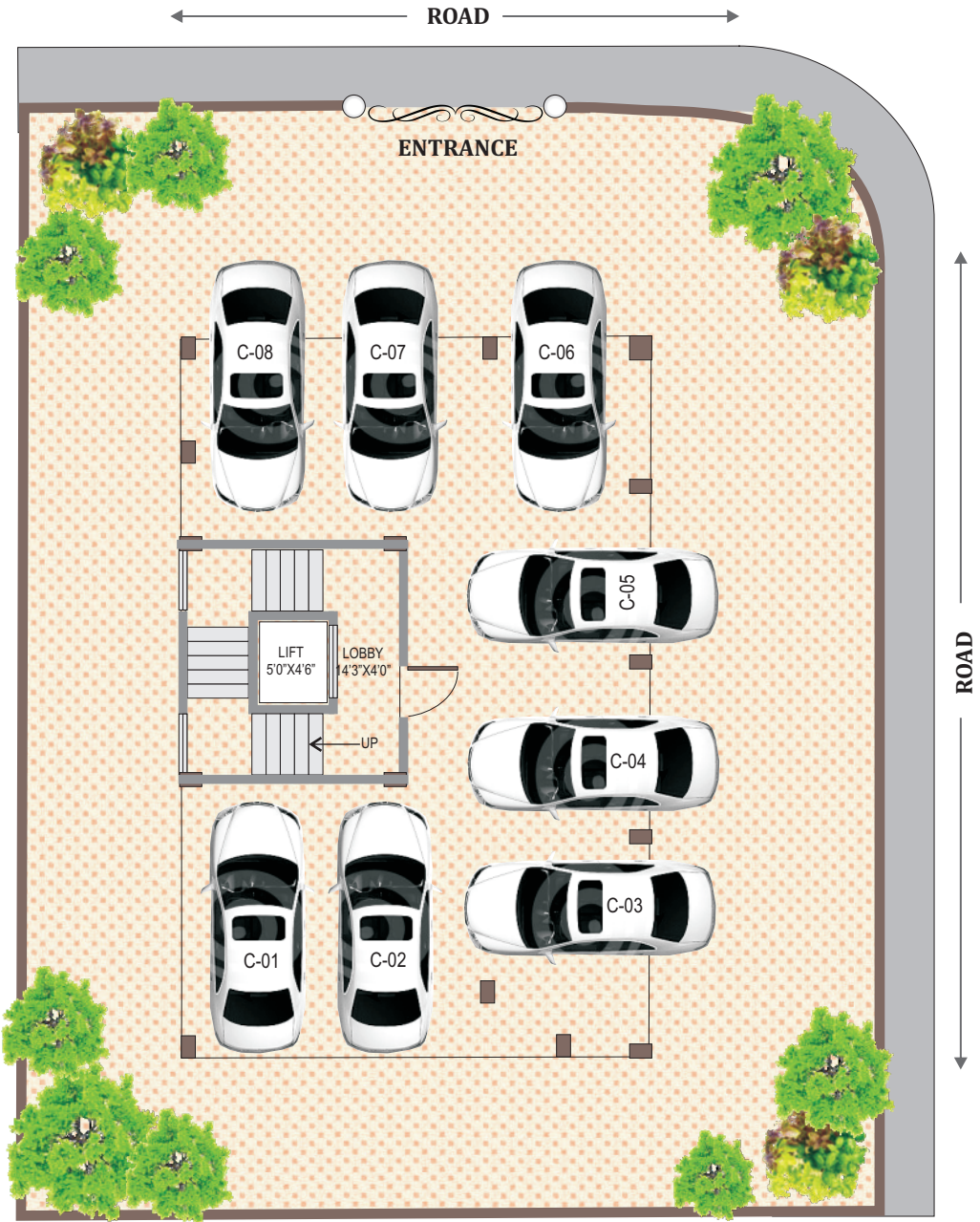


**3 D SECTIONAL VIEW**



TYPICAL FLOOR PLAN - 2 BHK





PARKING FLOOR PLAN

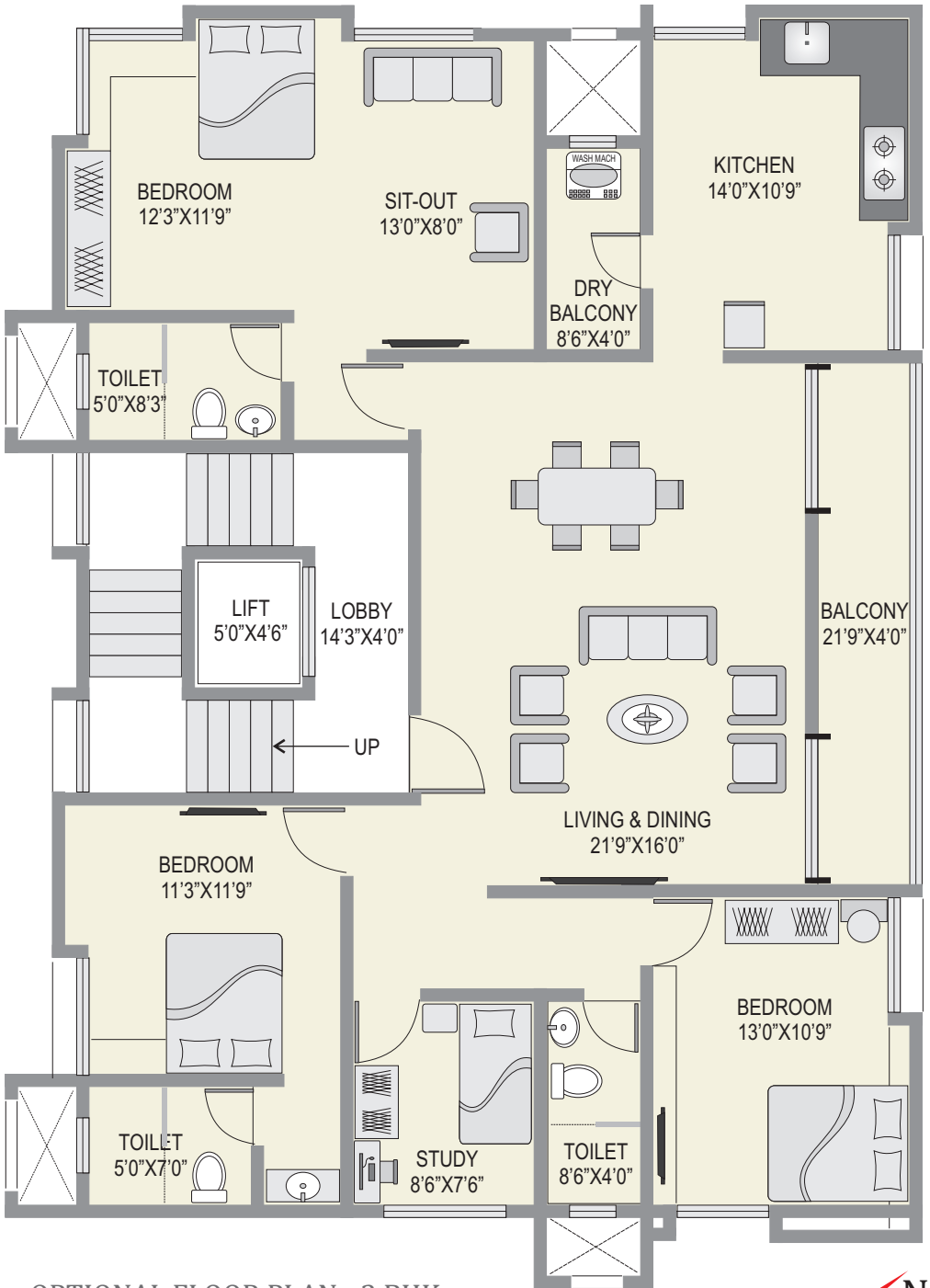




**OPTIONAL 3 BHK TOP VIEW**



**3 D SECTIONAL VIEW**



OPTIONAL FLOOR PLAN - 3 BHK





## **Sanskriti Skyscrapers Pvt. Ltd.**

5, Ashirwad Apartments, 1173 Sadashiv Peth, Limayewadi, Pune - 411030  
Tel : 020 41068999. M : 7774000484 E-mail : [info@sanskritiskyscrapers.com](mailto:info@sanskritiskyscrapers.com)

---

Office # 204, Akshay Complex, CTS No. 1050/51, Tilak Road,  
Next to Jayashree Garden Restaurant, Pune - 411002